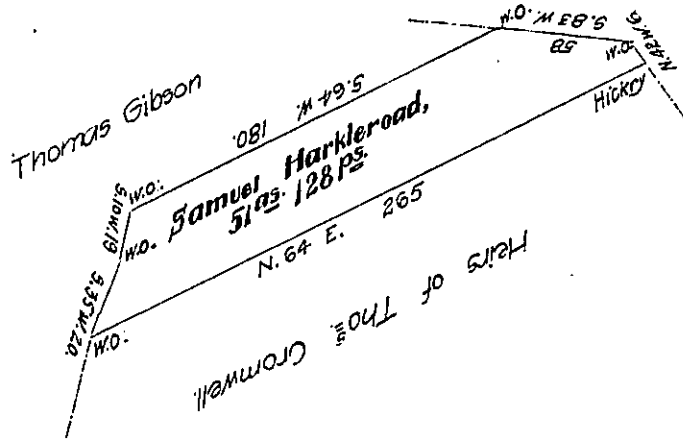


Riche & John Ashman



*Situate in Springfield township, Huntingdon County, Containing fifty one acres
 128 perches and allowance, surveyed the surveyed the 4th Day of September, 1817,
 in pursuance of a Warrant granted to Samuel Harkleroad dated October 8th, 1816.*

Jn^o Morrison, D.S.

*Jacob Spangler, Esq. }
 Surveyor General. }*

*IN TESTIMONY that the above is a copy of the original remaining on file in
 the Department of Internal Affairs of Pennsylvania, made
 conformably to an Act of Assembly approved the 16th day of
 February, 1833, I have hereunto set my Hand and caused
 the Seal of said Department to be affixed at Harrisburg,
 this eleventh day of December, 1907.*

Henry Houch
 Secretary of Internal Affairs.